
NORTH SHORE APAC PROPOSAL

MEADOWGLEN LAKE LANDSCAPING – FEB 9, 2020



POMONA LAKE: NORTH SHORE PROPOSAL

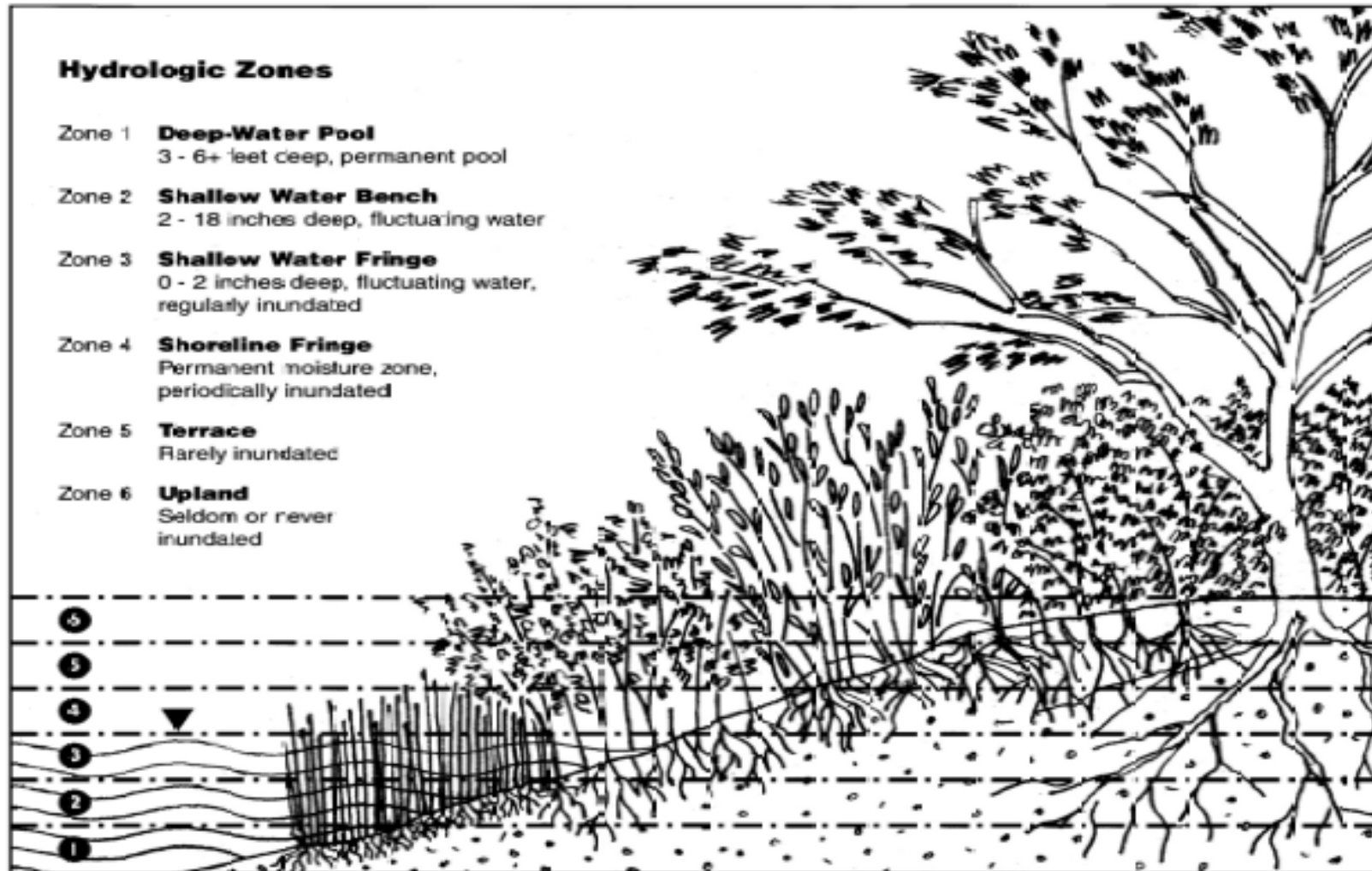


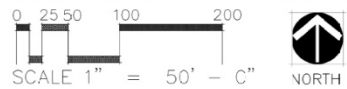
Figure 2: Hydrologic zones for planting herbaceous species in the Intermountain West. This is a general depiction of a riparian zone. Not all streams look like this one. In the real world, some of these zones may be absent (Ogler and Hoag 2000)(Drawing by City of Boise).

- The Meadowglen community would like to gain support and endorsement for a landscaping improvement project on the north shore of Pomona Lake.
- Detailed Landscaping plan has been provided by Bruce Kehr, LEED A.P. of Sunlit Designs, LLC

POMONA LAKE: NORTHSHORE PROPOSAL



- Aerial View of Landscape plan



LANDSCAPE LEGEND

DECIDUOUS CANOPY TREE	EVERGREEN TREE	DECIDUOUS SHRUBS	WETLAND PLANTS	NATIVE GRASS / FORBS SEED MIX
SMALL DECIDUOUS TREE	EVERGREEN SHRUBS	NATIVE SHRUBS SEED MIX		

Meadowglen Lake Concept Plan

Meadowglen Lake Sub-Division
Arvada, Colorado

DATE: 0-14-2020



POMONA LAKE: NORTH SHORE PROPOSAL

WETLAND SPECIES

PLANT SCHEDULE

SYM. COMMON NAME BOTANICAL NAME SIZE / CONDITION

DECIDUOUS CANOPY TREES

NLC NARROWLEAF COTTONWOOD POPULUS ANGSTIFOLIA 60 CI

DECIDUOUS ORNAMENTAL TREES

BN BEED'S WILLOW SALIX BEBBIANA 60 CI

FN FLANLEAF WILLOW SALIX PLANIFOLIA SPP. PLANIFOLIA 60 CI

GN COYOTE WILLOW SALIX EXIGUA 40 CI

FORBS

BJ BLUEJOINT CALAMAGROSTIS CANADENSIS 10 CI

NS NEBRASKA SEDGE CAREX NEBRASCENSIS 10 CI

WS WOOLLY SEDGE CAREX PELLITA 10 CI

HR HARDSTEM BULLRUSH SCHEENOPLECTUS ACUTUS 10 CI

NATIVE GRASS SEED MIX

COMMON NAME	% OF MIX	# PLS/acre
BLUE GRAMA (LOVINGSTON)	5	0.15
SWITCHGRASS (GREENVILLE)	5	0.55
LITTLE BLUESTEM (CAMPER)	5	0.5
BLUEBUNCH WHEATGRASS (SECARI)	15	1.5
GREEN NEEDLEGRASS (LUDLOW)	5	0.61
WESTERN WHEATGRASS (ROSANA OR ARRIBA)	25	6.93
BIG BLUEGRASS (SHERMAN)	30	1.8
	100	13.04 # /ACRE

DRYLAND SPECIES

PLANT SCHEDULE

SYM. COMMON NAME BOTANICAL NAME SIZE / CONDITION

DECIDUOUS CANOPY TREES

WC WESTERN CATALPA CATALPA SPECIOSA 1 1/2' MIN CAL. B4B, SPECIMEN

WB WESTERN HACKBERRY CELTIS OCCIDENTALIS 1 1/2' MIN CAL. B4B, SPECIMEN

DECIDUOUS ORNAMENTAL TREES

USD UTAH SERVICEBERRY AMELANCHIER UTAHENSIS #5 CONT. M.S. SPECIMEN

GO GAMBEL OAK QUERCUS GAMBELII #5 CONT. SPECIMEN

EVERGREEN TREES

RMJ ROCKY MOUNTAIN JUNIPER JUNIPERUS SCORULORUM #5 CONT.

PNP PINON PINE PINUS EDULIS #5 CONT.

EVERGREEN SHRUBS

CSJ COMMON JUNIPER JUNIPERUS COMMUNIS #5 CONT.

DECIDUOUS SHRUBS

NR WOOD'S ROSE ROSA MOCCOSII #5 CONT. 4 CANE/50" HT. MIN.

NNB NATIVE NINEBARK PHYTOCARPUS MONOSYNIUS #5 CONT. 4 CANE/50" HT. MIN.

NP NATIVE FOTENTILLA FOTENTILLA FRUTIGOSA #5 CONT. 4 CANE/50" HT. MIN.

GC GOLDEN CURRENT RIBES AUREUM #5 CONT. 4 CANE/50" HT. MIN.

WC WAX CURRENT RIBES GERSUM #5 CONT. 4 CANE/50" HT. MIN.

NNB NATIVE NINEBARK PHYTOCARPUS MONOSYNIUS #5 CONT. 4 CANE/50" HT. MIN.

SB COMMON SNWBERRY SYMPHORICARPOS ALBUS #5 CONT. 4 CANE/50" HT. MIN.

RMS ROCKY MOUNTAIN SUMAC RUS GLABRA OSMONTANA #5 CONT. 4 CANE/12" HT. MIN.

TLS THREE LEAF SUMAC RUS TRILOBATA #5 CONT. 4 CANE/12" HT. MIN.

SNY SOAPVEED YUCCA YUCCA GLAUCA #5 CONT. 4 CANE/12" HT. MIN.

FORBS

CM CREEPING MAHONIA MAHONIA REPENS #1 CONT.

YFP YELLOW PINELEAF PENSTEMON PENSTEMON PINIFOLIUS HERSEA YELLOW #1 CONT.

RRP RED ROCKS PENSTEMON PENSTEMON X MEXICALI RED #1 CONT.

AA ALPINE ASTER ASTER ALPINUS SOLIATH #1 CONT.

 NATIVE GRASS / FORBS SEED MIX

 NATIVE SHRUB SEED MIX

- Detailed specs of proposed plants and grass seed.
- Estimated Cost is ~\$46K

LOG STRUCTURE



FALLEN LOGS OFFER LOAFING SPOTS FOR TURTLES, BIRDS AND OTHER WILDLIFE.

POMONA LAKE NORTH SHORE: HISTORY

2016 North Shore Stabilization Project

- The City of Arvada made a substantial financial investment, after recognizing both the shore and trail had not been maintained in more than 25 years, in 2016 with the North Shore stabilization project.
- This project cost the city approximately \$500k and took 4 months to make the walking trail safer as well as stabilize the north shore bank.
- Unfortunately, this project also removed all trees and landscaping, leaving the shore very stark and barren. This has also impacted the local wildlife.

■ Before



■ After



POMONA LAKE NORTH SHORE: HISTORY

Previous City and Community Efforts of North Shore Improvements

■ 2017

Wild flower seeds donated by city and agreed to amend the maintenance of the area to give the seeds best chance to take

- Community stepped up to provide labor to plant approx. 100 lbs. of seeds along the north shore
- Community also donated water and time to water the seeds almost daily for 6 weeks to assist the seeds in taking
- Contractor discovered top soil used in the project had been contaminated with weeds.

■ 2018

Contractor agreed to come back and removed and replaced several areas of the top soil that was contaminated weeds

■ 2019

City asked residents along the north shore to let the city manage the shore in accordance to open space standards



- Community members planting wildflower seeds

- Despite these efforts and due to the contaminated top soil, the north shore remains barren

POMONA LAKE

■ Before



■ After



CITY OF ARVADA & MEADOWGLEN COMMUNITY

Successful History of Collaboration

- The Meadowglen Community has a long history of working with and teaming up with the City to make the community areas and Arvada open spaces beautiful.
 - **2017**
City donated cinder blocks, Community placed 80 Christmas trees in lake to improve fish habitat. This work created spawning beds for the bass.
 - **2012**
Pomona landscape rock project
City provided rock, community provided labor
 - **2009**
Forests of Daves was established along 80th
City provided trees, community provided labor for planting
 - **ANNUALLY**
Adopt a trail & Annual Lake Clean up

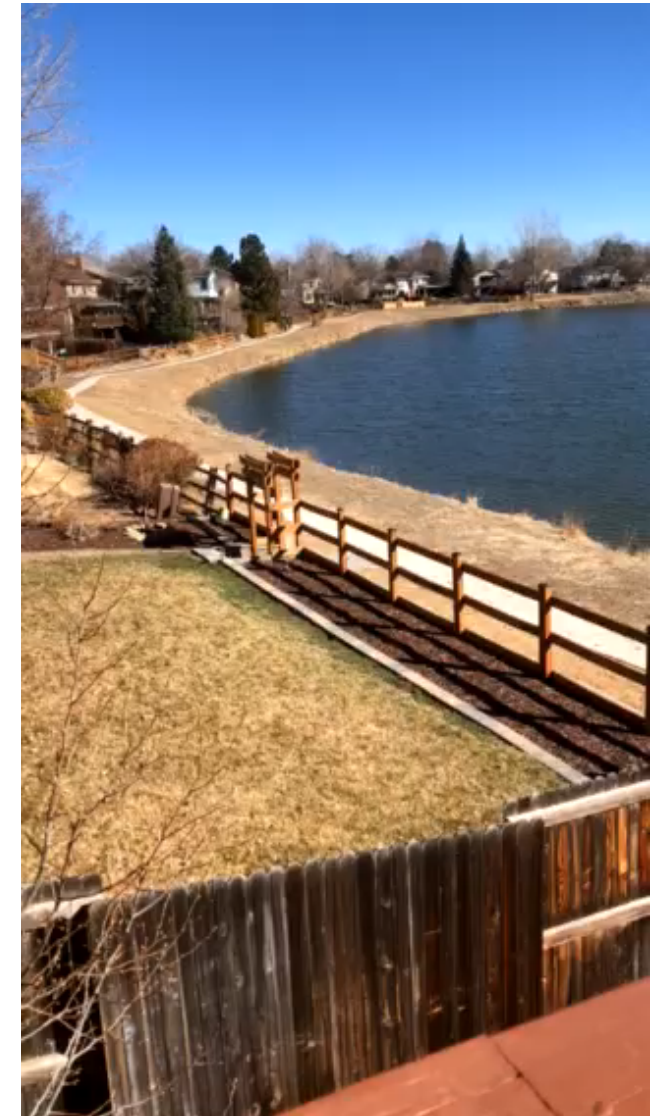


- Community members planting wildflower seeds

IMPORTANCE OF THIS TRAIL

Extremely high use trail for Arvada residents

- Not only just the 253 homes around the lake
- Trail is a branch of the Rocky Mountain Greenway Trail stretching from Rocky Mountain Arsenal to Standley Lake
- This video is a 45minute time-lapse showing the high usage of the trail (even in Feb.)



WHAT ARE WE ASKING FOR?

APAC Support

City of Arvada Approval & Funding

- APAC to review and approve landscaping proposal
 - Design is a dryland park design that will mimic and replicate many other parks and wet areas along this trail
 - Plan involves native grasses, shrubs, aquatic plants to improve water quality and fish habitat and a few trees and evergreens to provide year round color and depth.

Description	Cost*	% of Project
Shrub Seed Mix	\$17,583	39%
Grass Seed Mix	\$11,689	26%
Mobilization & General Conditions	\$5,000	11%
Log Structures	\$3,600	8%
Trees	\$3,040	7%
Mulch	\$1,035	2%
Wetland Plants & Watering System	\$465	1%
Total	\$44,675	

**Figures are rounded and approximations*

WHAT WE ARE COMMITTED TO

Meadowglen Community Commitment

- As always the Meadowglen community is willing to help. Whereas this proposal has not been approved yet, we do not have concrete deliverables from the community. However we are already discussing and brainstorming how we can assist.
- We have a very active community whose residents are always willing to step in to improve our neighborhood & community.
- Beautification committee has met and discussed their support if this proposal is approved by City.

Potential support may include:

- Meadowglen BOD open to financial donation
- Labor
- Volunteers to fill water bags for tree





CONTACTS

- JASON ZACK, MEADOWGLEN COMMUNITY MEMBER
 - JZACKCO@GMAIL.COM
 - 303-241-5592
- CATHY BARTLE, MEADOWGLEN COMMUNITY MEMBER
 - CBARTLE@AOL.COM
- BRUCE KEHR, LANDSCAPE ARCHITECH
 - BKEHR@SUNLITDESIGNS